

# *metals & enameling*

## *Spring Classes & Workshops*

APRIL - JUNE 2008

### *METALS multi-week classes*

#### Casting in Metal

Fridays, 6:30 PM - 9:30 PM  
10 classes, 4/18/2008 - 6/20/2008

**Tuition and Fees:** Member Fee: \$299.00 / Non-Member Fee: \$339.00 / Studio Fee: \$15.00  
Ian Henderson / Beginner-Intermediate / Metals Studio

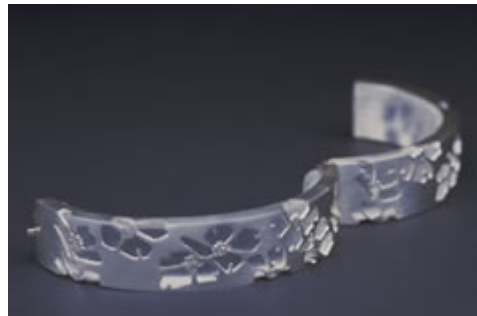
The casting process offers vast possibilities for creating three-dimensional and multiple works in metal. This class will focus on the practical methods of casting metals, from design to finishing. Basic to advanced casting methods will be explored, beginning with direct techniques using cuttlefish bones, and culminating with lost-wax processes using a centrifuge and vacuum. Basic mold making skills will be introduced, allowing for the duplication and production of multiple near-identical pieces of art. Students with previous casting experience will be challenged to refine wax models and moldmaking skills. Materials not included. Class limited to 10 students. Prerequisites: Proficiency in Jewelry/Metals I, Jewelry I skills

#### Jewelry and Metals I

Thursdays, 10:00 AM - 1:00 PM  
10 classes, 4/17/2008 - 6/19/2008

**Tuition and Fees:** Member Fee: \$299 / Non-Member Fee: \$339 / Studio Fee: \$15 / Materials Fee: \$60  
Abigail Heuss / Beginner-Intermediate / Metals Studio

Explore the basic fundamentals of working with metal to make wearable fine crafted jewelry or small scale sculptures. Learn basic techniques such as sawing, filing, roller printing, cold connecting, soldering, finishing and simple stone setting. Focus will be on proper tool use, developing skills and personal creativity through instructor guided projects. Projects may include pendants, bracelets, rings and/or earrings. Materials fee provides students with the basic materials for this course. Additional materials may need to be purchased depending on the size and scope of projects.



## Jewelry and Metals I

Mondays, 6:00 PM - 9:30 PM  
9 classes, 4/14/2008 - 6/16/2008

**Tuition and Fees:** Member Fee: \$299 / Non-Member Fee: \$339 / Studio Fee: \$15 / Materials Fee: \$60  
Heather Beck / Beginner-Intermediate / Metals Studio

Explore the basic fundamentals of working with metal to make wearable fine crafted jewelry or small scale sculptures. Learn basic techniques such as sawing, filing, roller printing, cold connecting, soldering, finishing and simple stone setting. Focus will be on proper tool use, developing skills and personal creativity through instructor guided projects. Projects may include pendants, bracelets, rings and/or earrings. Materials fee provides students with the basic materials for this course. Additional material may need to be purchased depending on the project.



## Beginner Wire Wrapping

Thursdays, 6:30 PM - 9:30 PM  
5 classes, 5/22/2008 - 6/19/2008

**Tuition and Fees:** Member Fee: \$149 / Non-Member Fee: \$169 / Studio Fee: \$15 / Materials Fee: \$45  
Selena Coverdale / Beginner / Enamels Studio

Learn how to do basic wire wrapping techniques to create one-of-a-kind jewelry. Learn proper tool use and how to choose the right materials. You'll transform straight sterling silver wire into unique jewelry pieces. Give a finished look to your work and make wire wrapping fun to do. Materials fee provides students with the basic materials for this course. Additional materials may need to be purchased depending on the size and scope of projects.

## Jewelry II

Thursdays, 6:30 PM - 9:30 PM  
10 classes, 4/17/2008 - 6/19/2008

**Tuition and Fees:** Member Fee: \$299 / Non-Member Fee: \$339 / Studio Fee: \$15 / Materials Fee: \$65  
Debbie Beaudette / Intermediate-Advanced / Metals Studio

This is the next step for beginners! This course continues to explore and refine the fundamental skills for working with metal to make jewelry. Instructor guided projects involve a higher level of soldering skills and technical hands-on experience with working sheet metal, wire and rod. As the student you are encouraged to create more detailed and involved projects such as rings, pendants, pins or three-dimensional objects. The focus will be expanding your knowledge of the materials and understanding more intricate techniques. Materials fee provides students with the basic materials for this course. Additional material may need to be purchased depending on the size and scope of projects. Prerequisite: Proficiency in Jewelry/Metals I, Jewelry I skills.



## Jewelry and Metals II

Fridays, 10:00 AM - 1:00 PM  
10 classes, 4/18/2008 - 6/20/2008

**Tuition and Fees:** Member Fee: \$299 / Non-Member Fee: \$339 / Studio Fee: \$15 / Materials Fee: \$65  
Lauren Beaudoin / Intermediate-Advanced / Metals Studio

This intermediate-level course will provide a format for students to investigate new techniques in metalsmithing and expand their knowledge of the materials. Hollow construction, surface enrichment, simple chain making, advanced soldering, stone setting and more will be covered. Students are encouraged to create more detailed and involved projects such as rings, pendants, pins or small scale sculpture. Materials fee provides students with the basic materials for this course. Additional material may need to be purchased depending on the size and scope of projects. Prerequisite: Jewelry/Metals I, Jewelry I skills

## Soldering Tips and Tricks

Wednesdays, 10:00 AM - 1:00 PM  
5 classes, 5/21/2008 - 6/18/2008

**Tuition and Fees:** Member Fee: \$149.00 / Non-Member Fee: \$169.00 / Studio Fee: \$15.00  
Lauren Beaudoin / Intermediate-Advanced / Metals Studio

This specialized class takes the "sweat" out of sweat soldering and helps solve the dilemmas that arise when trying to tackle challenging silver soldering set ups. Students will refine their setup techniques and torch work. Soldering jigs for setting up elements, holding devices and refractory materials will be demonstrated.. The chemistry of solders, fluxes and torches used by metalsmiths will be emphasized. Bring your soldering nightmares to class for resolution and learn to understand and love silver soldering! Materials not included. Prerequisite: Jewelry/Metals I, Jewelry I

## The Art of Lapidary

Wednesdays, 6:30 PM to 9:30 PM  
8 classes, 4/16/2008 - 6/4/2008

**Tuition and Fees:** Member Fee: \$239.00 / Non-Member Fee: \$279.00 / Studio Fee: \$15.00  
Katey Curtis / Intermediate-Advanced / Metals Studio

This course offers participants the opportunity to gain the skill and flexibility required to cut cabochon stones. Students will begin by learning the basic lapidary techniques of diamond sawing, cutting and polishing stones. Drilling cut stones will be introduced in order to use cold connections and multiple-layered stone settings. Students will also learn methods for preparing found objects such as shells, beach stones and glass for use in jewelry. Carving stone with diamond flex-shaft burrs and wheels and inlaying lines of metal and wheels as well as inlaying lines of metal into stone will be covered. Jewelry design incorporating stones will be discussed. Materials Not Included.

## Open Topics: Independent Study in Metals

Tuesdays, 10:00 AM - 1:00 PM  
10 classes, 4/15/2008 - 6/17/2008

**Tuition and Fees:** Member Fee: \$299.00 / Non-Member Fee: \$339.00 / Studio Fee: \$15.00  
Abigail Heuss / Intermediate-Advanced / Metal Studio

This class is designed for students with metalsmithing experience wishing to explore and develop individual projects and ideas. The instructor will provide technical support and encourage creative thinking through individual and class discussion, demonstrations and supportive critiques. Students may bring works in progress, or new ideas. Emphasis will be on exploring personal style. Prerequisite: Jewelry II, Jewelry/Metals 2 or permission of instructor. Materials not included.



## Enameling – 3 choices

Wednesdays, 9:30 PM - 12:30 AM  
10 classes, 4/16/2008 - 6/18/2008

Wednesdays, 1:00 PM - 4:00 PM  
10 classes, 4/16/2008 - 6/18/2008

Wednesdays, 6:30 PM - 9:30 PM  
10 classes, 4/16/2008 - 6/18/2008

**Tuition and Fees:** Member Fee: \$299.00 / Non-Member Fee: \$339.00 / Studio Fee: \$15.00  
Judi Daner / All Levels / Enamels Studio

Enameling is an ancient process in which vitreous glass (enamel) is fused and bonded onto metal by the application of heat through kiln firing. The Craft Center is one of the few centers teaching this craft today! The types of metals preferred for enameling are copper, steel for large-scale work, and fine gold or silver for precious jewelry. Traditional techniques including cloisonné, champlevé, limoges, basse taille and grisaille are taught in this course, as well as more contemporary and experimental techniques suitable for large scale works. Cost of enamels and metal not included.



## Knifemaking

Tuesdays, 6:30 PM - 9:30 PM  
10 classes, 4/15/2008 - 6/17/2008

**Tuition and Fees:** Member Fee: \$299.00 / Non-Member Fee:  
\$339.00 / Studio Fee: \$15.00  
Chuck Gedraitis / All Levels / Metals Studio

This course will introduce the basic techniques for hand forging knives and fine-edged tools. A variety of construction methods and finishing techniques will be presented to produce a quality hand-crafted tool or knife. During the first half of the course emphasis will be on selecting metals and designing a functional blade. Demonstrations will include forging, shaping, grinding and polishing. Various heat treatments and tempering of steel will be used and discussed. The second half of this course will focus on all the detailed information related to blade handles and guards. Demonstrations will include both full-tang and narrow tang styles, guards, butt caps, decorative file work and spiral dagger handles to finish blades. Materials not included. Limited to 8 students



## Chasing and Repoussè

Wednesdays, 10:00 AM - 1:00 PM  
5 classes, 4/16/2008 - 5/14/2008

**Tuition and Fees:** Member Fee: \$149 / Non-Member Fee: \$169 / Studio Fee: \$15 / Materials Fee: \$40  
Lauren Beaudoin / All Levels / Metals Studio

This 5 week long class explores a new way to shape and move metal through the delicate art of chasing and repoussè. Students begin by making their own chasing tool which they will use to form a piece of copper sheet into an intricate high relief sample image. That knowledge is refined through the next project of creating a panel to be used in a piece of jewelry, box lid or wall piece. All levels welcome. Materials fee provides students with the basic materials for this course. Additional material may need to be purchased depending on the size and scope of projects. Limited to 8 students

## *METALS workshops & special topics*

### Fun with Metals: Pet Tags

Saturday, April 26, 10:00 AM - 1:00 PM  
1 class

**Tuition and Fees:** Member Fee: \$35.00 / Non-Member Fee: \$40.00 / Materials Fee: \$30.00  
Lauren Beaudoin / Beginner / Metals Studio

Your pet can be just as stylish as you! During this workshop students will design and make a sterling silver pet tag for their animal friend. Techniques such as piercing, sawing, soldering and finishing will be discussed. You can even stamp the name of your pet onto their tag! Students are encouraged to bring in pictures of their pet to get inspiration for their tags. Materials fee provides for the supplies during the workshop.

### Enameling Demonstrations with Lilyan Bachrach

Sunday, May 4, 12:30 PM - 4:00 PM  
1 class

**Tuition and Fees:** \$50.00  
Lilyan Bachrach / All Levels / Enamels Studio

This one day workshop will allow students to work along side renowned enamelist Lilyan Bachrach. Lilyan will demonstrate her enameling techniques and answer questions students may have about the fine art of enameling. All levels welcome. Class is limited to 12. Materials not included.



### Fun with Metals: Making a Silver Ring

Saturday, May 10, 12:00 PM - 4:00 PM  
1 class

**Tuition and Fees:** Member Fee: \$45.00 / Non-Member Fee: \$50.00 /  
Materials Fee: \$25.00  
TBA / Beginner / Metals Studio

Looking for a new hobby, bored with what's on TV, or finally ready to take that jewelry course you never got to? Why not learn to make a silver ring? The structure of this class provides a great opportunity for students to get one-on-one time with a professional metalsmith. By the end of the day students will have designed, sized, textured and soldered a finished silver ring. Materials fee includes the cost of metal and solder.



### Pulp Paper Pins

Friday, May 23, 6:00 PM – 9:00 PM  
1 class

**Tuition and Fees:** Member Fee: \$36.00 / Non-Member Fee: \$40.00 / Materials Fee: \$15.00  
Lauren Beaudoin / Beginner-Intermediate / Metals Studio

Not sure what to do with all that recycled paper? How about transforming it into a piece of wearable art! During this workshop students will learn how design and create their own take home pulp broach. Pulp preparation, dying and finishing will be discussed. No prior jewelry or metalworking experience needed!

### Cuttlefish Casting

Saturday, May 31, 12:00 PM to 4:00 PM  
1 class

**Tuition and Fees:** Member Fee: \$45.00 / Non-Member Fee: \$50.00 / Materials Fee: \$5.00  
TBA / All Levels / Metals Studio

This basic casting workshop will explore the cuttlefish casting technique. Students will be introduced to the soft structure of the cuttlefish bone and instructed on how to carve into the bone, which will then be used as a casting mold. Students may use sterling silver or bronze metal to cast and create a ring, pendant or earrings. Cost of metal not included but will be available for purchase.

***REGISTER NOW! 508-753-8183***